



HK Pipelines

333 N.W. 49th Place, Des Moines, Iowa 515/283-0500 (24 Hours Every Day) www.hydro-klean.com

Hydro-Klean Gets to the Root of the Problem for Jefferson, Iowa

Winter 2000

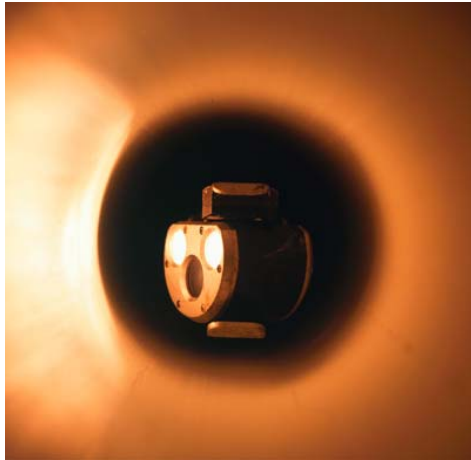


By Brian Rinehart,
Marketing Manager

Not long ago, the folks at the City of Jefferson had a tough nut to crack. They had a 1,600-foot long sanitary sewer that

ran along an easement in a residential area and through a ravine. Over the top of the sewer are many trees that had roots that had grown into the sewer. Mother Nature has cleverly equipped the roots of plants (and especially trees) with the uncanny ability to seek moisture and nutrients. When we have a dry weather pattern like the last few years, the roots get very aggressive for the search for moisture as they find their way into sewers much faster than normal rainfall years. The tree roots enter the sewers through joints, small cracks, or any other defect. Once inside the sewer, the roots not only impede the flow, they can continue to grow and actually fracture the pipe, causing very expensive damage.

When the City of Jefferson staff discovered symptoms that were believed to be caused by tree roots, they took action to try and remove the roots. They tried various cleaning, cutting, and chemical methods to rid the sewer of roots. The problem was beyond the city's resources and Mr. Phillip Siglin, Plant Supervisor, contacted Hydro-Klean to help. Hydro-Klean was first inspected the sewer with a pipeline video camera and confirmed the problem. Sure enough, the tree roots had heavily infiltrated the sewer line. Next, Hydro-Klean's 10,000 PSI truck jet was used to remove the roots. The high-



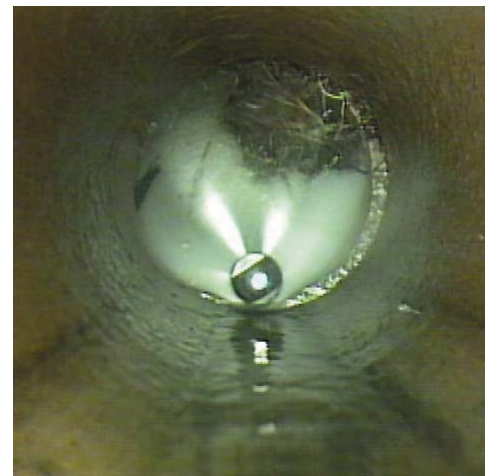
Pipeline Video Camera

pressure water jet was inserted in the sewer from a nearby manhole and was used to turn the tree roots into "confetti". The entire process was fast, effective, and without damage to the pipe. Last of all, the sewer was inspected again and it was revealed that the tree roots were effectively removed.

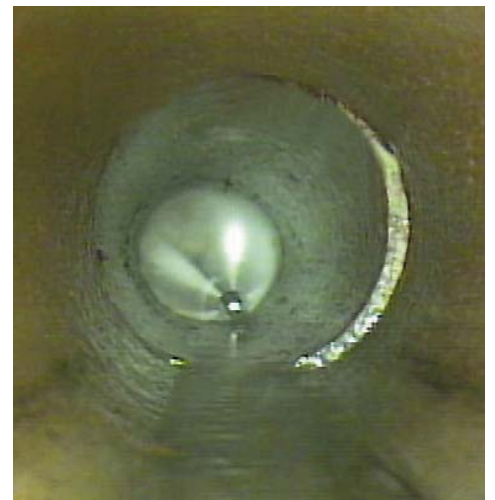
"We have reestablished normal flows and highly recommend this technique instead of costly line replacement. Granted these roots may grow back, but with scheduled preventative maintenance, this should not be any great alarm even during dry weather conditions so noted this past couple of years. I appreciate Hydro-Klean and the technicians that professionally do their job." – Phillip Siglin, City of Jefferson Plant Supervisor.

The 10,000 PSI water jetting process is also very effective for removing infiltration scale, cast iron tuberculite nodule buildup, and other hard deposits common in sanitary sewers. Industrial applications also ideally suited for 10,000 PSI cleaning pipe cleaning in-

clude process sewers for food processors. They have the tough challenge of dealing with plant and animal fats, and oils that reduce pipe flow performances. The 10,000 PSI water jet is a good choice for cleaning pipes that lower pressure equipment can't handle. High-pressure pipe cleaning yields cleaner pipes and is much faster in getting the job done.



Before



After